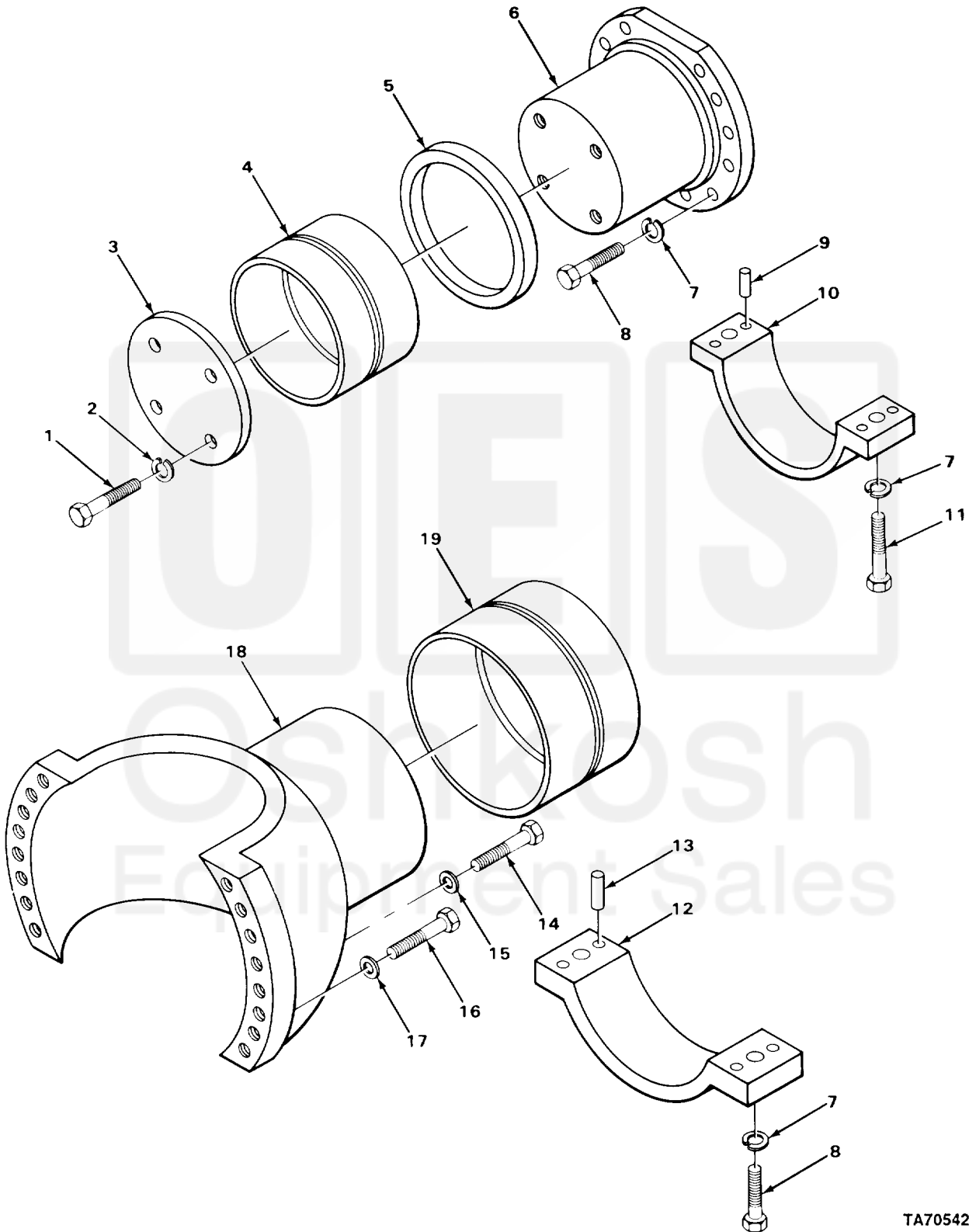


SECTION II

TM 10-3930-242-24P



TA705423

FIGURE 97. TRUNNIONS, INNER AND OUTER.

(1) ITEM NO	(2) SMR CODE	(3) CAGEC	(4) PART NUMBER	(5) DESCRIPTION AND USABLE ON CODES (UOC) GROUP 1000 FRONT AXLE ASSEMBLY FIG. 97 TRUNNIONS, INNER AND OUTER	(6) QTY
1	PFHZZ	96906	MS90728-185	.SCREW,CAP,HEXAGON H PLATE MTG	8
2	PFHZZ	96906	MS35338-51	.WASHER,LOCK TRUNNION MTG	8
3	XDHZZ	03677	LT1-543	.PLATE BEARING RETAINING	2
4	PAHZZ	03677	LT1-777	.BEARING,SLEEVE	2
5	PAHZZ	03677	LT1-527	.SPACER,RING TRUNNION BEARING	2
6	PAHZZ	03504	118147	.TRUNNION,PIVOT	2
7	PFHZZ	96906	MS35338-50	.WASHER,LOCK	38
8	XDHZZ	03504	118179	.SCREW,CAP,HEXAGON H	38
9	PFHZZ	96906	MS16555-392	.PIN,STRAIGHT,HEADLE BEARING PLATE	8
10	XDHZZ	03677	LT1-539	.CAP,AXLE MOUNT	2
11	PFHZZ	96906	MS90727-172	.SCREW,CAP,HEXAGON H CAP MOUNTING	8
12	XDHZZ	03677	LT1-538	.CAP,PILLOW BLOCK	2
13	PFHZZ	96906	MS16555-394	.PIN,STRAIGHT,HEADLE BEARING PLATE	8
14	PAHZZ	03504	118178	.BOLT,MACHINE TRUNNION MOUNTING	4
15	PAHZZ	53496	C0UH224	.WASHER,FLAT TRUNNION MOUNTING	4
16	PAHZZ	03504	118177	.SCREW,CAP,HEXAGON H TRUNNION MTG	24
17	PAHZZ	03504	112284	.WASHER,FLAT TRUNNION MTG	24
18	XDHZZ	12603	118146	.TRUNNION,CENTER PIV	2
19	PFHZZ	03677	LT1-778	.BEARING,SLEEVE	2

END OF FIGURE

